



107 E. Main Street  
Carthage, MS 39051

Carthage: 601-267-5671 • Philadelphia: 601-656-2601  
Rankin: 601-829-1201 • Sebastopol: 601-625-7422

*This institution is an equal opportunity provider and employer.*

*A tradition of dependable, hometown service since 1937.*

CENTRAL ELECTRIC WILL HOLD ITS

# Annual Meeting

MARCH 17, 2020 AT THE CARTHAGE COLISEUM

*In accordance with the laws of the State of Mississippi and the bylaws of the Association, three directors will be elected for three year terms. Members will elect one director from Attala County and two directors from Leake County.*

## SECTION 4.04. Nominations

(a) It shall be the duty of the Board to appoint, not less than sixty (60) days nor more than ninety (90) days before the date of a meeting of the members at which Board members are to be elected, a Committee on Nominations consisting of three (3) members who shall be selected from the given areas from which Board members are to be elected so as to insure equitable representation. No existing Cooperative employees, agents, officers, directors or known candidates for director, and close relatives (as hereinafter defined) or members of the same household of existing Cooperative employees, agents, officers, directors or known candidates for director may serve on such committees. The committee shall receive and consider any suggestion as to nominees submitted in writing by members of the Cooperative. The committee, keeping in mind the principle of equitable representation, shall prepare a list of nominations for Board members, and submit its list to the Secretary not less than thirty (30) days nor more than sixty (60) days before the date of the annual meeting.

(b) Any fifty (50) or more members who are in good standing, are from the given area from which a Board member is to be elected, and acting together, may nominate a Director candidate for the area by petition. Any such petition for nomination must be submitted on a form designated and provided by the Cooperative. Each member signing such petition shall place thereon the date of signing, address, account number and service location of the member. Such nominations made by petition, if any, shall be delivered to the Secretary not less than forty-five (45) days nor more than sixty (60) days before the date of the annual meeting. Such nominations shall be posted by the Secretary

at the same place where the list of nominations made by the Committee on Nominations is posted. A member may not make more than one (1) nomination by petition for each vacancy. If a member signs more than one petition for a director vacancy, then the signature of the member bearing the latest date of signing by the member will be considered and any previously dated signature by the member on any other petition(s) will be deemed invalid, null and void. If a member signs more than one petition on the same date, all signatures of the member bearing the same date of signing will be deemed invalid, null and void. (c) The Secretary shall prepare and post at the principal office of the Cooperative at least twenty (20) days before the meeting a list of nominations for Board members. The Secretary shall be responsible for mailing with the notice of the meeting or separately, but at least ten (10) days before the date of the meeting, a statement of the number of Board members to be elected and the counties they will be elected from and represent, and the name and address of each of the candidates nominated by the Committee on Nominations or by petition.

*A report from the Committee of Nominations, along with proxies, ballots and other annual meeting information will appear in the March issue of Today in Mississippi. As a member-owner of Central Electric Power Association, you have a right to participate in the annual meeting to hear the latest cooperative news and to elect the board of directors. Mark your calendar for March 17 and plan to attend Central Electric's annual meeting at the Carthage Coliseum on Highway 16 in Carthage.*

## Local students selected for 2020 Youth Leadership Program

Six area high school juniors were recently selected through an interview process to represent Central Electric Power Association during an upcoming statewide leadership workshop in Jackson, Miss., and the annual National Rural Electric Cooperative Association Youth

Tour in Washington, D.C. this summer. Now in its 34th year, the Electric Cooperatives of Mississippi Youth Leadership Program is an enjoyable educational experience that makes a lasting impact on participants.

### The program seeks to:

- Help students develop the confidence and ability to become better leaders in their schools and communities
- Stimulate their interest in governmental affairs and encourage their participation in the democratic process
- Inform them about their electric cooperative, the cooperative form of business and the distribution of electricity
- Foster interaction among students from communities throughout Mississippi and the nation

## Central Electric Power Association congratulates these students!



### GEORGIA CLAIRE RUDOLPH

*Daughter of Ben and Paige Rudolph of Carthage. She attends Leake Academy. Georgia Claire plans to attend college and pursue a degree in speech pathology.*



### MARY KATE MORAN

*Daughter of Brett and Emily Moran of Philadelphia. She attends Neshoba Central High School. Mary Kate plans to attend Mississippi State University to pursue a degree in biomedical engineering and attend medical school to become a dermatologist.*



### MEGAN MCMINN

*Daughter of Chris and Missy McMinn of Brandon. She attends Hartfield Academy. Megan plans to continue her mom's legacy as a Phi Mu at a university. She will attend medical school to become a pediatrician.*



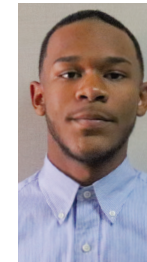
### MALLORY LONG

*Daughter of Brian and Lynn Long of Carthage. She attends Leake Academy. Mallory plans to attend East Central Community College and continue her education at Mississippi State University to pursue a minor in business and attend law school.*



### EMMA GRACE DILLARD

*Daughter of John and Deborah Dillard of Brandon. She attends St. Andrew's Episcopal School. Emma Grace plans to attend medical school and start a career in the medical field.*



### ORLANDO BROWN

*Son of Jeremy and Shemese Brown Haynes of Carthage. He attends Leake County High School. Orlando plans to attend Morehouse College to pursue a degree in zoology and a master's degree in business administration.*

# Merry Christmas

from everyone at Central Electric

**Our offices will be closed December 24 and 25 for Christmas and January 1 for New Year's Day.**

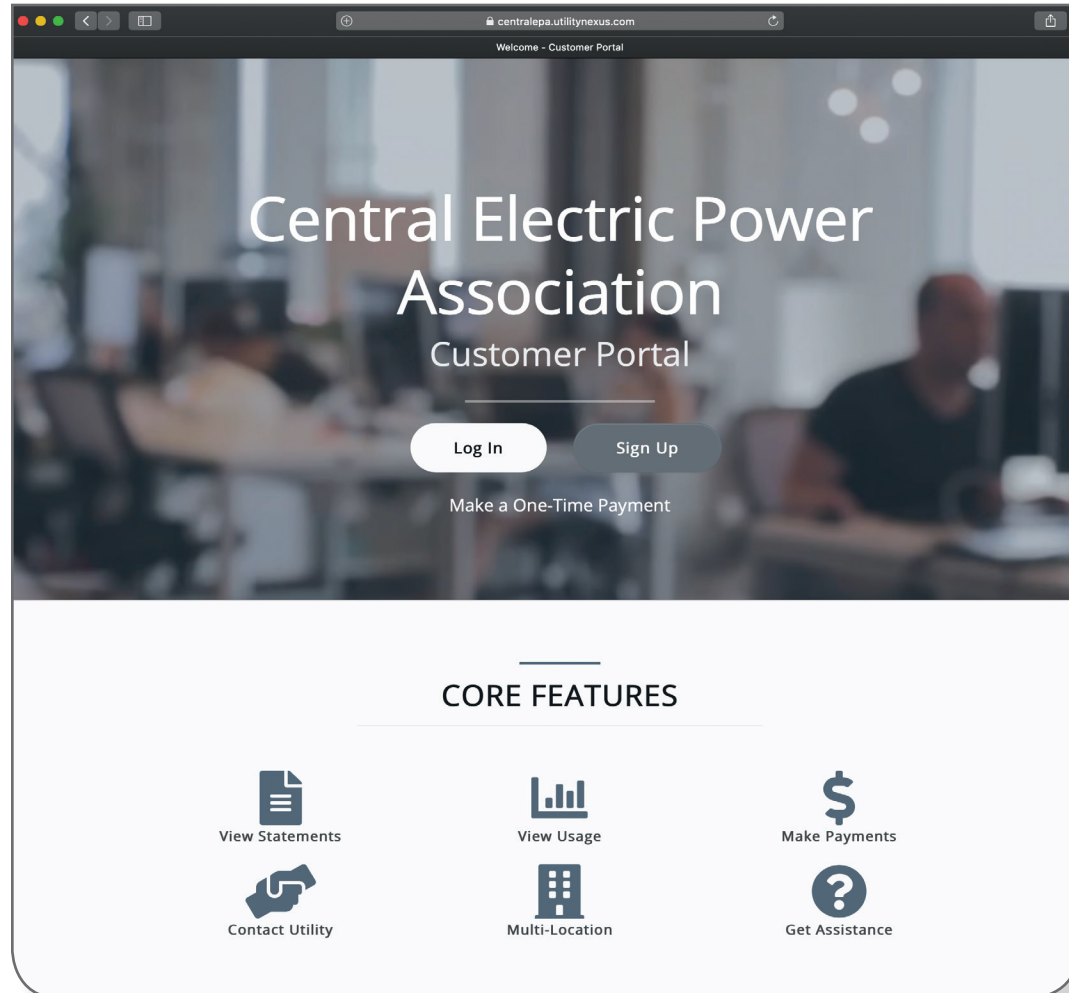
Call **601-267-3043** or visit [www.centralepa.com](http://www.centralepa.com) to report an outage. **CEPA dispatchers are on duty 24 hours a day, 7 days a week**



[www.centralepa.com](http://www.centralepa.com)

# Try our **NEW** online portal!

- 1 See your payment history and account balances
- 2 Receive email and text notifications for bill and payments
- 3 Set up Autopay
- 4 View your monthly usage



## Access your account... Any device, any time!

Go to [www.centralepa.com](http://www.centralepa.com) and click on **OrbitONE** to sign up!

See the reverse side of your electric bill for more details.



Making memories with your family around the table just got easier – and so much more

# Delicious!

Whether you work inside or outside the home, you know what it's like to balance a busy household, and the task of cooking dinner can be daunting. **Busy Moms: A Farm to Table Fabulous Cookbook** is filled with go-to meals for your busy family. Full of step-by-step, easy-to-follow recipes, **Busy Moms** helps you plan a complete meal any night of the week, using only the freshest ingredients for your family. From slow-cooker creations to one-pot meals to air fryer treats, this cookbook will get your family back around the table as quickly as possible, even on your busiest night.

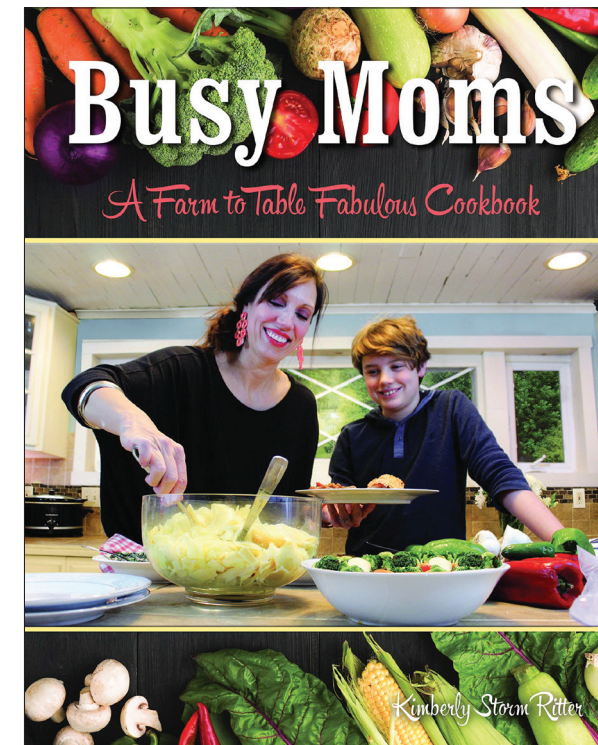
## Ham & Cheese Roll-up

### INGREDIENTS

- 1 (8-ounce) tube refrigerated crescent rolls
- 6 slices honey ham
- 6 slices sharp American cheese
- 1 cup shredded Cheddar cheese



Unroll dough in one piece. Line with a layer of ham, then American cheese and finish with cheddar cheese. Roll up tightly and slice into 1- to 2-inch slices. Lay flat on a baking sheet coated with cooking spray. Bake at 375° for 15 to 20 minutes. *Yield: 4 servings*



Check out this new cookbook from Great American Publishers

- Enjoy quick, delicious meals your family will love – even your pickiest eater.
- Stock your pantry and freezer using Ritter's Busy Mom Essentials shopping list and make delicious meals without those last minute runs to the grocery store.
- Many meals can be prepped ahead of time, or even frozen, then quickly reheated for serving.
- With an entire chapter dedicated to veggies and starches, the menu possibilities are endless.
- Enjoy no-stress meal planning because every main dish recipe contains recommendations for scrumptious side dishes to complete your meal.
- Farm to Table Fabulous Tips make dinner extra-special any night of the week.
- With Ritter's tips and tricks up your sleeve, you'll have more time for making memories around the table at the end of your busy day.



Visit the website at [www.greatamericanpublishers.com](http://www.greatamericanpublishers.com) or call Great American Publishers, 1-888.854.5954 for more information or to order.

# Tropical Depression Olga impacts Central Electric's service area

Substantial rainfall and damaging winds from Tropical Depression Olga hit central Mississippi on Saturday, October 26, 2019. Central Electric Power Association (CEPA) experienced sustained power outages in Attala, Leake, Neshoba, Scott, Newton and Kemper counties and promptly mobilized their field operations staff. CEPA worked through the night to restore power.

CEPA had more than 18,000 members without electric service and approximately 70 broken poles due to the severe storms.

Twenty-one additional personnel arrived to aid in power restoration. CEPA would like to thank: North East Mississippi EPA, East MS EPA and Black Warrior Electric Membership Cooperative for their assistance. CEPA would also like to thank the membership for their patience and support during this time.

Manager Brian Long praised CEPA employees and the dedication of their families, along with the employees from three cooperatives in Mississippi and Alabama.



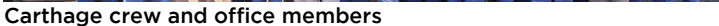
Rankin District crew



Philadelphia crew and office members



Carthage crew and office members



## The following is a breakdown of outage by day end:

**OCTOBER 26**  
**8,000**  
SATURDAY

**OCTOBER 27**  
**2,900**  
SUNDAY

**OCTOBER 28**  
**1,580**  
MONDAY

**OCTOBER 29**  
**150**  
TUESDAY

As of 5:00 p.m. Wednesday, October 30, all power has been restored to all members that can receive power.



Carthage service crew



Sebastopol crew and office members

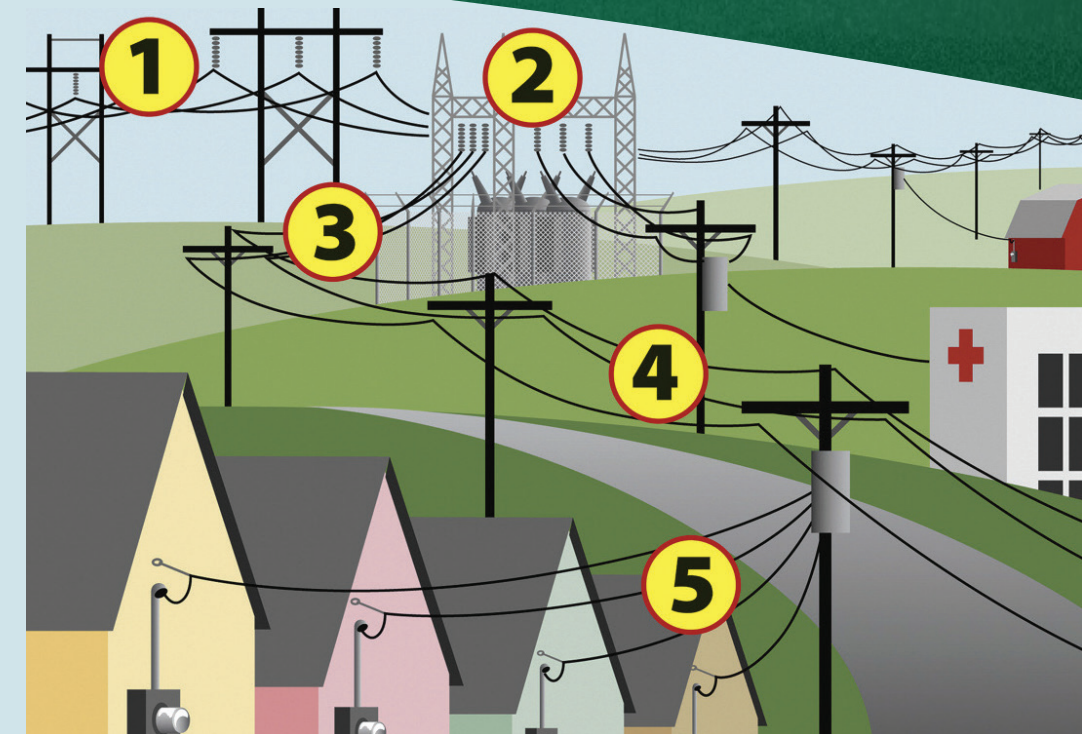
Central Electric Power Association serves over 36,000 member accounts in a seven-county area in Central Mississippi including: Attala, Kemper, Leake, Neshoba, Newton, Rankin and Scott counties.

# HOW POWER IS RESTORED

In the event of a prolonged power outage, rest assured that we are working hard to restore your power as safely and quickly as possible. There are several things you can do to help the process. If you see a downed line, remember to ALWAYS ASSUME it is a "live wire." Stay away from it and any trees or structures that may be in contact with it. Call us or 911 immediately to report it.

You may still be without power while surrounding homes have lights. This could be because they have generators or they may be on a different circuit than your home. It could also be that the service line to your home is down or there is damage to your meter box. In either case, call us. We cannot repair your meter box - you will need to contact a licensed electrical contractor for that. We will, however, repair your service line if your meter box is in proper working order.

Power outages are an inconvenience for everyone. Our goal is to restore power to all of our members as safely and quickly as possible.



## How we restore your electric service

**STEP 1** - We focus on the biggest repairs first to restore the most members - this means generating facilities, high-voltage transmission towers and lines that feed distribution substations.

**STEP 2** - Substations are next. A repair here can bring power back to a large number of homes and businesses.

**STEP 3** - Distribution three-phase lines are then checked. They carry reduced voltage electricity from the substations to towns, communities and subdivisions.

**STEP 4** - Next, we check the single-phase lines which carry electricity to utility poles or underground transformers outside homes and other buildings. Critical services such as hospitals, fire and police take priority here, followed by restoration to the greatest number of consumers.

**STEP 5** - Finally, the service line between your home and transformer on a nearby pole may be damaged. This may keep you in the dark while your neighbors have power. Call us if you have an outage here.

## After the storm

### Remember: Safety first

- Please use common sense - electricity and water do not mix.
- Never attempt to plug in or use an electrical appliance or device while standing in water or on a damp service.
- If water entered your home, you should have your electrical wiring inspected by a qualified electrician as quickly as possible.
- In cases where electric motors were flooded, they should be thoroughly checked by an electrician or certified repairman before reconnected to a power source.
- Keep freezer and refrigerator doors closed during the time you're without electric service.
- Treat all downed power lines as energized. Beware of downed lines hidden by debris.
- Report all downed lines immediately.
- Prevent generator back feed. Plug appliances or equipment directly into the generator. Keep the generator in an open area to reduce carbon monoxide emissions.
- Stay tuned to your local TV and radio stations for electric power restoration information.