

107 E. Main Street
Carthage, MS 39051

Carthage: 601-267-5671 • Philadelphia: 601-656-2601
Rankin: 601-829-1201 • Sebastopol: 601-625-7422

This institution is an equal opportunity provider and employer.

A tradition of dependable, hometown service since 1937.

Central Electric recognized at Community Development Partnership Annual Banquet

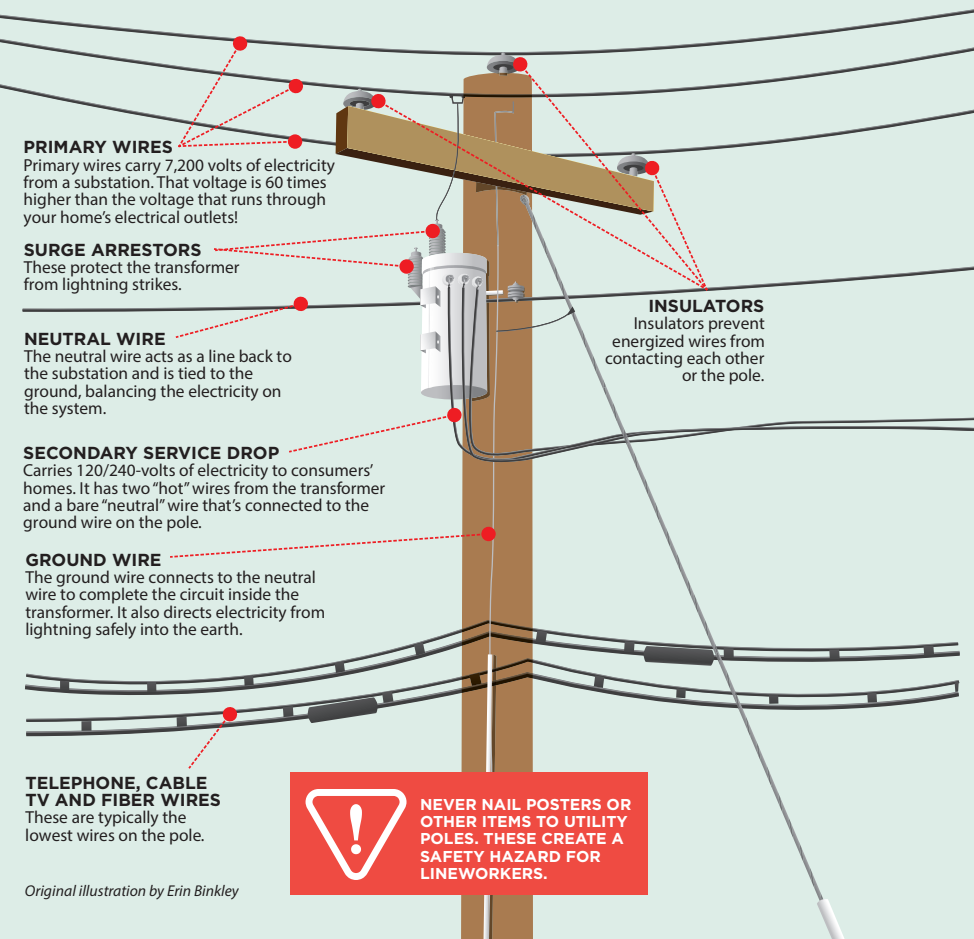


Representative Scott Bounds presents Central Electric Power Association the Large Business Award in Neshoba County during the Community Development Partnership annual banquet.

Pictured left to right: Hannah Watson (Director), Brian Long (General Manager), Representative Scott Bounds and Danny Burnett (District Manager).

WHAT'S ON THAT POLE?

This illustration shows the basic equipment found on electric utility poles. The equipment varies according to the location and the service they provide.



Original illustration by Erin Binkley

Directors earn CCD Certification

Central Electric Power Association directors have successfully completed the Credentialed Cooperative Director (CCD) Certification.

To earn the certification, each director must complete five courses designed to provide basic knowledge and skills required of cooperative board members. The curriculum includes Director Duties and Liabilities; Understanding the Electric Business; Board Roles and Relationships; Strategic Planning; and Financial Decision Making.

Central Electric Power Association congratulates Mike Brooks, Hannah Watson and Earl Browning on their certification as a Credentialed Cooperative Director.



Pictured left to right: Mike Brooks, Hannah Watson and Earl Browning.

Happy Thanksgiving from

Central Electric Power Association

We will be closed November 28 & 29. In case of a power outage or emergency, please call 601-267-3043 or visit www.centralepa.com to report an outage. **CEPA dispatcher on duty 24 hours a day, 7 days a week.**

2019 Holiday Events Listing

ATTALA COUNTY

November 2 - Pop-up Flea Market
7:00 a.m. until 3:00 p.m. - *Downtown Kosciusko*

November 21 - Kosciusko Downtown Christmas Lighting
5:30 p.m. - *Downtown Square*

November 24 - Christmas Open House
1:00 p.m. until 5:00 p.m. - *Retail stores*

November 24-December 21 - Merry Market Place
Mon. - Fri., 9:00 a.m. until 5:00 p.m., Sat. 10:00 a.m. until 3:00 p.m. - *KAP Office*

November 26 - Carriage Rides
5:30 p.m. until 7:30 p.m. - *Retail stores*

November 30 - Small Business Saturday - *Local retail stores*

December 2 - Kosciusko Christmas Parade
6:30 p.m. - *Downtown Square*

December 3 - Courthouse Carols
6:15 p.m. until 7:00 p.m. - *Downtown Court Square*

December 10 - Courthouse Carols
6:15 p.m. until 7:00 p.m. - *Downtown Court Square*

December 8 - The Sounds of Christmas
2:00 p.m. - *Mary Ricks Thorntown Cultural Center*

December 17 - Carriage Rides
5:30 p.m. until 7:30 p.m. - *Downtown Square*

NESHOBA COUNTY

November 10 - Holiday Open House
1:00 p.m. until 5:00 p.m. - *Retail stores*

November 23 - Tis' the Season Market Place -
Neshoba County Coliseum

November 30 - Small Business Saturday - *Local retail stores*

December 2 - Philadelphia Christmas Parade - *Downtown*

LEAKE COUNTY

November 10 - Christmas Open House
1:00 p.m. until 5:00 p.m. - *Retail Stores*

November 30 - Small Business Saturday - *Local retail stores*

December 3 - Carthage Christmas Parade
6:00 p.m. - *Downtown Courthouse Square*

December 12 - Sippin' Cider
2:00 p.m. until 7:00 p.m. - *Retail stores and local businesses*

SCOTT COUNTY

December 7 - Small Business Saturday - *Local retail stores*

December 6 - Forest Christmas Parade - 6:00 p.m. -
Downtown

RANKIN COUNTY

November 30 - Small Business Saturday - *Local retail stores*

December 7 - Grand Lighting of the Park, Chili cook-off,
Pop-up shopping & photos with Santa - 2:00 p.m. until
8:00 p.m. - *Winner's Circle Park*

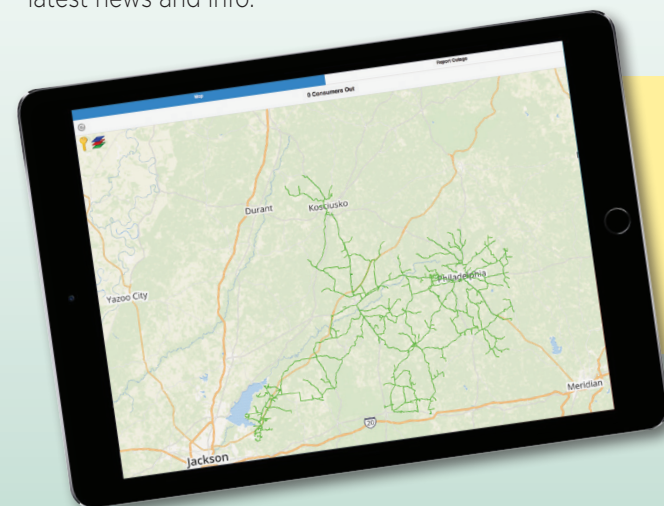
THANKFUL

Check out Central Electric's **NEW** website!

centralepa.com



Central Electric Power Association recently completed a redesign of its website at centralepa.com. The site is easily accessible from either a desktop or mobile device and information is regularly updated. Find everything you need to use energy wisely and safely, report power outages and stay up-to-date with our latest news and info.



Report power outages and view Central Electric's live outage map easily on your device.

KEEP YOUR CONTACT INFORMATION UPDATED

Call any Central Electric office to change the number associated with your account.

Carthage: 601-267-5671

Philadelphia: 601-656-2601

Sebastopol: 601-625-7422

Rankin: 601-829-1201

Or visit any Central Electric office.

Central Electric's new outage reporting system will automatically recognize your account if your phone number is correct.



POWER at your Fingertips!

We know you are busy, so our website offers convenient, easy to use options at the click of a button. Visit centralepa.com today to feel the power at your fingertips.



Home

Report an Outage Pay Your Bill My Account

1-866-846-5671

Home myCEPA myCommunity Storm Center About CEPA

PAY ONLINE

Central EPA

WELCOME TO THE CENTRAL EPA ONLINE BILL PAY

Make a one-time payment for your Central EPA bill on our secure site.

We accept: VISA, MasterCard, Discover, American Express

Make Payment

Register and make payments 24/7 online at centralepa.com.

REPORT AN OUTAGE

Map Report Outage

Account:

(Enter the account number as it is on your bill. Enter the first part before the dash in the first box. Second part in the second box.)

OR

Phone Number:

(The number tied to our Electric Account)

If the power goes out, report your outage online at centralepa.com's **QUICK LINKS**. Make sure to keep your contact number up to date, and call from the number associated with your account for the greatest ease in reporting an outage.

VIEW OUR OUTAGE MAP

View current outages with just a click of a button through Central Electric's outage map located under the **QUICK LINKS** at centralepa.com.

THESE TOOLS ARE AVAILABLE NOW...AND SO MUCH MORE!

- Learn about Central Electric's history and mission
- View weather forecasts
- Application for new electric service
- View rate schedule
- Discover ways to save with energy efficiency tips
- Access quick website links
- Learn how to read an electric bill

centralepa.com